



ONE INDUSTRY LEADING COMPANY. *FIVE SPECIALIST DIVISIONS.*

Locations

HEAD OFFICE

Core Cut Limited
Bankhead
Broxburn
West Lothian
EH52 6PP

T 01506 854 710
F 01506 853 068

E office@corecut.co.uk

REGIONAL OFFICE

Core Cut Limited
Unit 3, Greenland Road Ind. Park
Dannemora Drive
Sheffield
S9 5DF

T 0114 243 5533
F 0114 244 7394

www.corecut.co.uk

@corecutltd Core Cut Ltd Corecut





**ONE
INDUSTRY
LEADING
COMPANY.
FIVE
SPECIALIST
DIVISIONS.**

Over 45 years at
the cutting edge.

Headquartered in Broxburn in West Lothian, Scotland, and with strategically based offices throughout the country, our fully mobile workforce can respond to your needs immediately.

For over 45 years we have built an enviable reputation with our highly trained team of CSCS qualified operators successfully completing thousands of contracts promptly and precisely, skilfully using the very latest cutting edge equipment.

In short, Corecut delivers a highly professional range of contracting services throughout the UK.

CORECUT[®]
DRILLING & CUTTING

DIAMOND DRILLING AND CUTTING

KNOW HOW



Diamond Drilling Services

Diamond Drilling is the most versatile and efficient method of forming holes and openings in a wide range of hard materials, from Heavily Reinforced Concrete and Natural Stone to fragile Terrazzo Tiles, to almost unlimited profiles and depths.

At Core Cut we are proud of the speed at which we can undertake and complete even the most complex drilling operation and continue to evolve and develop techniques and equipment to solve any drilling problem.

Utilising and pioneering the latest technology, Core Cut are able to drill holes in a number of applications from New Build Housing Contracts to Complex Civil Engineering and Nuclear Decommissioning projects.

The versatile range of equipment can be Hand Held Electric, Rig Mounted, Self Contained Trailer Rig or Remotely Deployed and is lightweight and adaptable allowing even the most demanding projects to be undertaken with speed and precision.

Where appropriate Core Cut can utilise Stitch Drilling, which is a technique of forming large and unconventional shapes by using a series of overlapping holes which are free from spalling and require little or no reinstatement.

This procedure can be used across the four plains of vertical, horizontal, angled and inverted.

KEY FEATURES

- Lightweight and versatile equipment
- Hole sizes from 8mm – over 1500mm
- Low noise output plus dust and vibration free drilling
- The most precise method of drilling service penetrations
- Dry drilling available where required
- Range of power sources (electric, hydraulic, or compressed air)
- High performance automated rigs
- New slurry containment and re-cycling systems allows wet drilling in finished areas
- Structural integrity maintained due to non-percussive techniques



Floor Sawing Services

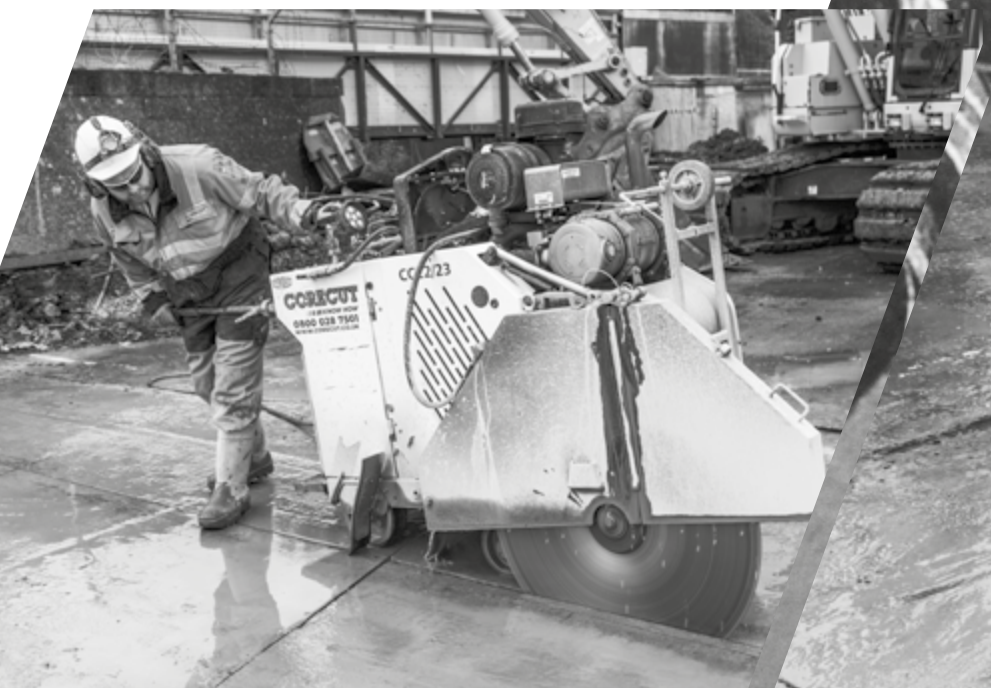
When you need to slice through Heavily Reinforced Concrete or Asphalt our range of High Output Precision Equipment gives clean edges and aids in the breaking out of unwanted sections. Ideally suited to horizontal surfaces such as roads, pavements and runways we can cut up to a depth of 800mm and achieve the result in a very short timescale.

As well as external Floor Sawing, Corecut also specialises in the cutting of internal floor slabs. Cutting depths of up to 600mm thick can be achieved in environments such as factories, supermarkets and hospitals where speed of operation and consideration of location are imperative.

We can also cut expansion joints up to 50mm wide quickly and accurately with our self-propelled joint cutting saws.

KEY FEATURES

- Highly precise cutting of reinforced concrete and asphalt
- High powered, low-emission turbo diesel-engined equipment for external production floor sawing
- Electrically-powered equipment for internal use
- Split saws featuring component interchangeability for inaccessible areas
- Demolition cutting for refurbishment
- Can be used to remove defective concrete
- Loop cutting
- Precision cutting of joints using compact self-propelled saws
- Low level of vibration
- Blade types to suit every application
- Dust free



Wall Sawing Services

Using the latest in High Frequency Electric and Hydraulic Wall Saw technology, we can precisely cut openings for doors, windows, and ventilation units, as well as remove entire sections of structures in materials such as heavily reinforced concrete, brickwork, and stone. This is especially useful in buildings where access for conventional equipment is restricted, with cutting depths reaching up to 1000mm in the most demanding situations.

Our Wall Saws are highly versatile and lightweight, making them ideal for use in scenarios where heavier Floor Saws are not feasible. Additionally, they are remotely operated, which minimizes vibration and reduces noise levels for the operator.



KEY FEATURES

- /// Precision cutting up to depths of 1000mm utilising blades of up to 2200mm diameter
- /// Precise remedial works
- /// Remote controlled operation for increased safety
- /// Range of cutting including angle cutting, inverted cutting, stair cutting and flush cutting
- /// Speed & versatility
- /// Fume free

Wire Sawing Services

Wire Sawing was traditionally used for many years in the quarrying trade, however the technique has been perfected for use in the Concrete Cutting industry.

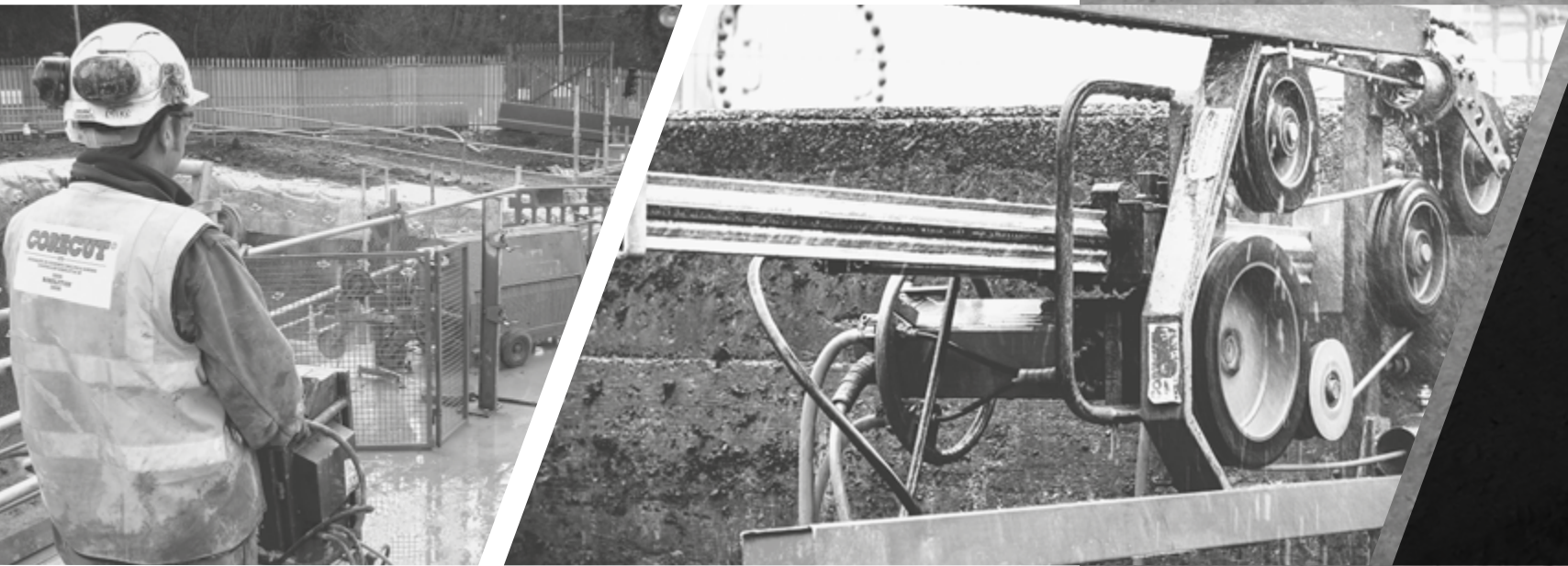
Using this technique, a diamond-impregnated wire is fed through a sequence of guide pulleys and passed through or around the section of concrete that needs cutting and then formed into a loop. The wire loop is then pulled continuously through the concrete section until the cut is accomplished.

Diamond Wire Sawing is the perfect technique when confronted with the issue of removing substantial areas of heavily reinforced concrete in complex situations where there is limited access such as a bridge deck or the removal of columns and beams, where depth and speed of cut are imperative.

Diamond Wire Sawing that uses High Cycle Electric or Hydraulic Equipment is by far the quickest and most flexible method of

cutting concrete that has been heavily reinforced. The Wire Saw is able to cut even the thickest sections of all construction material.

Corecut's team of Wire Sawing experts can achieve cutting rates in excess of 4sqm per hour and can also cut circular openings up to 2500mm diameter producing clean, straight and smooth cut surfaces with no damage to the remaining structure.



KEY FEATURES

- Non-percussive, fumeless and quiet
- Smooth cut face
- Unlimited cutting depth
- Horizontal, vertical and angled cutting of circular openings up to 2500mm diameter
- Flexible and quick
- Plunge cutting facility which allows blind and rebated openings to be formed
- Remote controlled operation for increased safety
- Cutting rates in excess of 4sqm per hour



Controlled Demolition Services

ROBOLITION

Corecut is the UK's leading Remote-Controlled Demolition contractor and have over 45 years' experience of providing expert solutions to the construction industry. The company have worked on some of UK's most well-known projects and through our Robolition brand, we specialise in providing unique solutions to complex requirements.

Jobs that might once have seemed impossible are now within your reach with Robolition. This compact Electric, Fume-Free Remote-Controlled machine climbs stairs with ease and can be manoeuvred, lifted or hoisted up to the most exposed positions. It works over twelve times harder and faster than a man with a jackhammer – and a lot more safely.

With its astonishing power to weight ratio, Robolition handles tools that normally require a carrier at least twice as heavy. You can equip it with Hydraulic Breakers, Concrete Crushers, Drilling Equipment, Wall Saws or Buckets to perform many functions.

Its flexibility is phenomenal. Thanks to the three-part robotic arm, the machine's working radius is immense. The low centre of gravity and strong support legs keep it steady, even when the arm is fully extended.

KEY FEATURES

SAFE

- Remote-controlled use from up to 30m
- Remote-controlled operation removes risk of hand/arm vibration syndrome

HIGHLY MANEUVERABLE

- Works in combined spaces and can pass through standard doors
- Climbs stairs with ease
- Long reach in excess of 6 metres

ENVIRONMENTALLY FRIENDLY

- Electric/fume free
- Works in existing buildings without noise or vibrations

POWERFUL

- Ability to hydraulically crunch reinforced concrete up to 700mm thick
- Equivalent power to conventional machines 5 times its weight

HIGHLY VERSATILE

- Equip with hydraulic breakers, concrete crushers, drilling equipment, wall saws, or buckets to perform many functions
- Three-part robotic arm



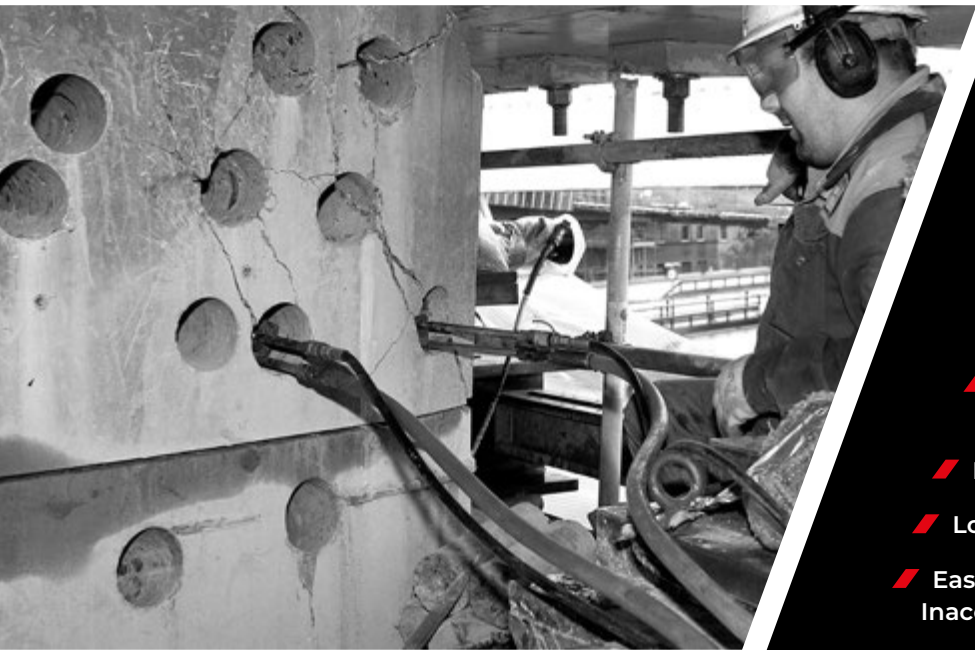
Hydraulic Bursting Services



Hydraulic Bursting is one of the safest and most efficient methods of removing Reinforced or Mass Concrete, Brickwork, or Natural Stone.

Hydraulic Bursters are placed in pre-drilled holes and expanded to induce controlled cracking of the material. Thus reducing it to manageable sections for removal.

What's more, the equipment can be used in confined spaces without risk. Indeed, Core Cut have used this technology to remove Heavily Reinforced Concrete up to 5m thick in structures such as Dams, Bridges and Nuclear Power Stations where a precise, controlled system of removal was required.



KEY FEATURES

- /// Non-percussive
- /// Dust Free
- /// Bursting Power Ratios of Over 1000 tonnes
- /// Electric, Diesel and Petrol Options
- /// Low Noise
- /// Easily Accesses Sensitive and Inaccessible Areas
- /// Full Range of Case Studies Available
- /// Fully Trained CSCS Accredited Operators
- /// Fully Equipped Mobile Workforce Covering the UK and Europe

Hydraulic Crunching Services



Hydraulic Concrete Crunching is an extremely effective way to carry out Controlled Demolition of a variety of materials that is also friendly to the environment.

The jaws of the breaker are placed on the open edge of the concrete structure and hydraulic pressure is applied to force the jaws to close, crushing the concrete into rubble. As the procedure is non-percussive there is limited risk of damage to nearby structures and the low levels of noise minimises disruption.

At Corecut we have a comprehensive range of Concrete Crunching machines that enable us to perform a wide range of functions. From our most powerful crushers that have an impressive crushing force of 45 tons to

hand crushers which are perfect for refurbishment projects, especially where there is limited access or the area is particularly sensitive.

Furthermore, our range of concrete crunching machines keep noise, dust and vibration levels to a minimum, whilst remote operation enables increase operator safety.

Corecut are experts at using hydraulic crushers to demolish floors, walls, and staircases up to 350mm thick – quickly, silently, and with very little dust or vibration.



KEY FEATURES

- /// Non-percussive
- /// Dust Free
- /// Bursting Power Ratios of Over 1000 tonnes
- /// Electric, Diesel and Petrol Options
- /// Low Noise
- /// Easily Accesses Sensitive and Inaccessible Areas
- /// Full Range of Case Studies Available
- /// Fully Trained CSCS Accredited Operators
- /// Fully Equipped Mobile Workforce Covering the UK and Europe

Surface Preparation Services



Corecut offers the full range of Surface Preparation and concrete treatment services from machine mounted micro planing to super polishing of decorative concrete slabs to create HTC Superfloor type finish. Utilising the most sophisticated Surface Preparation technology available, fully trained CSCS accredited operators can give you the finish required in any application.



KEY FEATURES

- /// Diamond Grinding
- /// Scabbling
- /// Planing
- /// Captive vacuum shot blasting
- /// Coatings removal
- /// High spot removal
- /// Slab level reduction
- /// Floor finish restoration
- /// Bridge deck membrane removal
- /// Concrete polishing
- /// Latex and adhesive removal



Anti-Slip Grooving Services



The movement of animals and mechanical machinery on concrete surfaces produces through time, a slippery and dangerous surface both to livestock and humans. Valuable cattle sometimes have to be disposed of, as a result of a fall or torn muscles caused by slipping on these floors.

Our purpose built machines use diamond blades to smoothly and precisely cut grooves into slats and concrete, unlike other grooving methods our machines leave a clean square edge with no damage to the surrounding concrete providing unparalleled levels of grip, resulting in increased safety for both your herd and you.

Grooves are placed at approximately 60mm centres and generally orientated perpendicular to the direction of travel. Grooves should be cut in two directions and can be either 90 degrees or diagonal to each other i.e. chess board design.

Depending on the quality of the concrete and the level of trafficking most grooved surfaces should maintain levels of grip for up to 10 years at which point the process can be repeated.

Our compact self propelled equipment allows us to access most areas including passageways, pens, loading areas and slats for dairy and beef farms.

We can offer very fast response times and with outputs in the region of 50m² per hour most jobs can be completed within a day with minimal disruption.



KEY BENEFITS



REDUCED COSTS



SAVE TIME



CLEANLINESS



ANIMAL WELFARE



MINIMAL DISRUPTION



DURABILITY

Concrete Scanning Services



Corecut in conjunction with the very latest Ferrosan technology from Hilti are at the forefront of structural surveying and the analysis of the steel reinforcement in reinforced concrete structures.

The Ferrosan PS1000 system detects reinforcing bars, pre- and post-tensioning tendons, metal and plastic pipes and electric and glass-fiber cables quickly even over a wide area. It is equipped with three radar antennas and can find concealed objects at depths of up to 300mm.

The verification of reinforcement is vital in today's modern building techniques and Reinforcement Surveys can aid in a variety of situations.

The specially designed PC software permits further processing, evaluation, exact analysis and documentation of all the data recorded.



KEY FEATURES

- Verification of reinforcement
- Checking of cover
- Avoiding rebar hits
- Scans large areas quickly
- Provides a viewable image of the reinforcement
- Extended PC evaluation and document possibilities
- Reinforcement shown as clearly visible grey-scale image
- Single scans up to 30m
- Dust and water splash proof



Kwikblast Wet Blasting



Corecut uses Quill Falcon's industry leading Kwikblast Wet Blasting System. This unique system, which combines water, blast media and air to provide an efficient, yet gentle method of abrasive blasting.

How it works

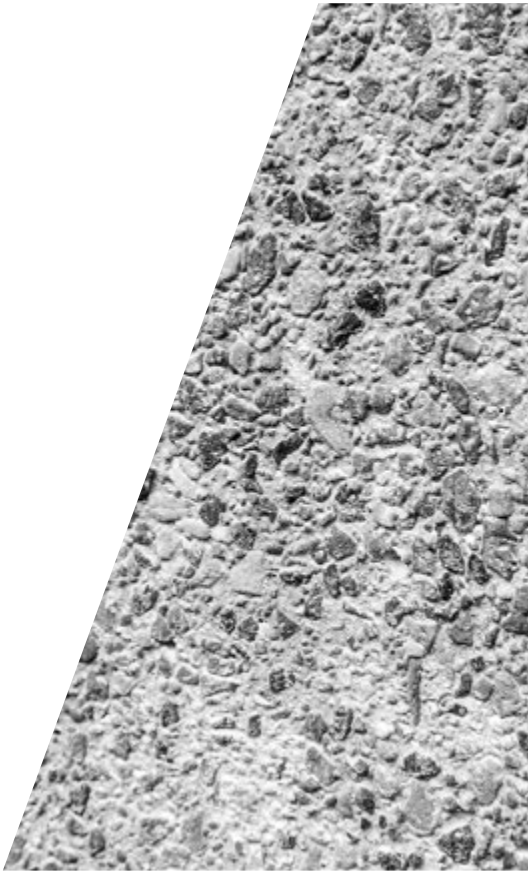
Wet abrasive blasting, also known as vapour abrasive blasting, removes coatings, contaminants, corrosion, and residues from hard surfaces. It's similar to dry sandblasting. The main advantage of vapour abrasive blasting over dry sandblasting is that it reduces dust, allowing for better visibility and better operational precision.

Vapour abrasive blasting can also be known as wet blasting, wet abrasive blasting, vapour blasting, slurry blasting, and wet sandblasting.

Wet abrasive blasting can substitute for dry sandblasting for virtually any application, but there are surfaces, conditions, and environments for which wet blasting is especially advantageous.

Wet blasters can operate effectively at lower PSI, removing coatings without damaging the underlying substrate. Vapour abrasive blasting is a preferred method for blasting antique, fragile surfaces, and soft surfaces (including wood). In addition, the presence of lubricating water reduces heat due to friction that can warp metal surfaces.

Ideal for road line removal, exposing aggregate or reinforcing in concrete, removing tacky coatings, the removal of heavy corrosion and coatings, as well as the more delicate removal of coatings from aircraft panels, car panels and graffiti removal with soda. The Quill Falcon is intrinsically safe for the petrochemical industry and is ideal where conventional blasting is not possible or practical.



KEY FEATURES

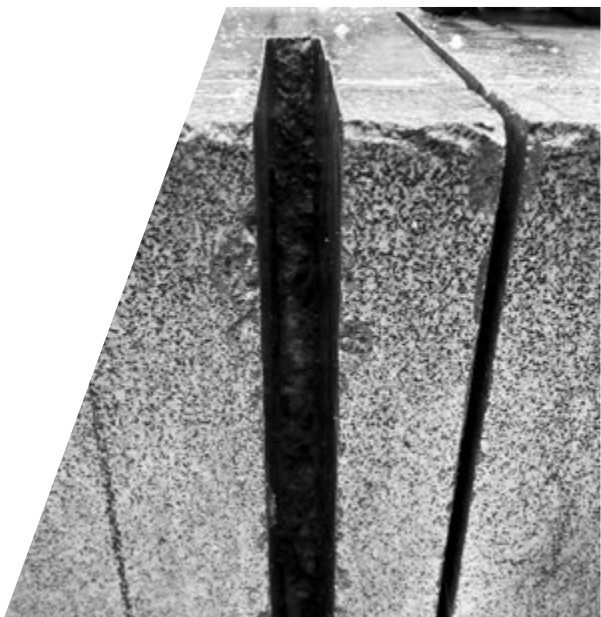
- Environmentally friendly graffiti removal
- Wet blasting = reduced dust
- Road marking removal
- Coating removal
- Concrete cleaning
- Brick cleaning
- Stone cleaning
- Concrete texturing



Specialist Sawing Services



Core Cut also offer a full range of Specialist Sawing alternatives which can be used in conjunction with our conventional Floor, Wall and Wire Sawing techniques. These specialist saws such as Electric Hydraulic and Petrol Chain and Ring Saws and Hydraulic Zohrro Sword Saws allow square or rectangular openings to be formed with no over cutting at the corners to a depth of up to 1000mm across a wide range of materials.



KEY FEATURES

- /// No over cutting on corners (i.e. square edges)
- /// Cutting depth up to 1000mm
- /// Low noise output
- /// Non-percussive
- /// No dust due to wet cutting
- /// Multi-functional
- /// Flexible power sources (petrol, electric, or hydraulic)
- /// Full range of case studies available

More Specialist Services



ROTARY PERCUSSIVE DRILLING

Our fully automatic Rotary Percussive Drills allow holes to be drilled for fixings, starter bars and anchors achieving high levels of output in a variety of applications and situations without exposing the operator to the dangers of hand arm vibration syndrome.

THERMIC LANCING

Where extremely heavily reinforced concrete, steel, or cast iron needs to be cut, then Thermic Lancing can offer the solution.

WALL CHASING

Utilising the very latest in dust free Wall Chasing technology, Corecut are able to form concealed channels for cables, pipes, and conduits in bricks, block, reinforced concrete, and masonry.

MICROTRENCHING

Microtrenching is a dry cutting technique where narrow, shallow trenches are cut, typically on one side of an asphalt road. Trench sizes can range from 10mm - 130mm wide and up to 600mm deep. Dust is removed from the worksite during cutting by a vacuum system connected to the cutter wheel, ensuring cleanliness of the site.

GROUTING AND STRUCTURAL REPAIRS

Corecut offer a wide range of Grouting services that range from Machine Base Grouting to the infilling of cavities behind walls tunnel linings, from the lining of tunnel to the bulk infilling of disused sewers. Corecut's expert Grouting team have even conducted repairs to hydroelectric power stations and reservoirs.

HELICAL PULLDOWN MICROPILE

The proven and reliable system for correcting foundation problems.

The Helical Pier Foundation System offers a technically superior and cost efficient alternative to other remedial systems.

The concept operates on the principal of turning a helical (screw) pier into stable subsoil strata until the torque applied indicates that the necessary load capacity has been achieved. Adjustable brackets are then attached to the base of the foundation walls connecting the piers to the foundation.

The weight is then shifted to the piers allowing repositioning which retains any further movement.

This system, which is backed by over 80 years of structural engineering experience, contrasts with other methods which use the structure's weight to force pipes and concrete cylinders down into the ground. Such costly and time consuming methods require extensive excavation which can disturb site features such as walkways and landscaping.



Rotary Percussive Drilling



Locations

HEAD OFFICE

Core Cut Limited
Bankhead
Broxburn
West Lothian
EH52 6PP

T 01506 854 710
F 01506 853 068

E office@corecut.co.uk

REGIONAL OFFICE

Core Cut Limited
Unit 3, Greenland Road Ind. Park
Dannemora Drive
Sheffield
S9 5DF

T 0114 243 5533
F 0114 244 7394

www.corecut.co.uk



@corecutltd



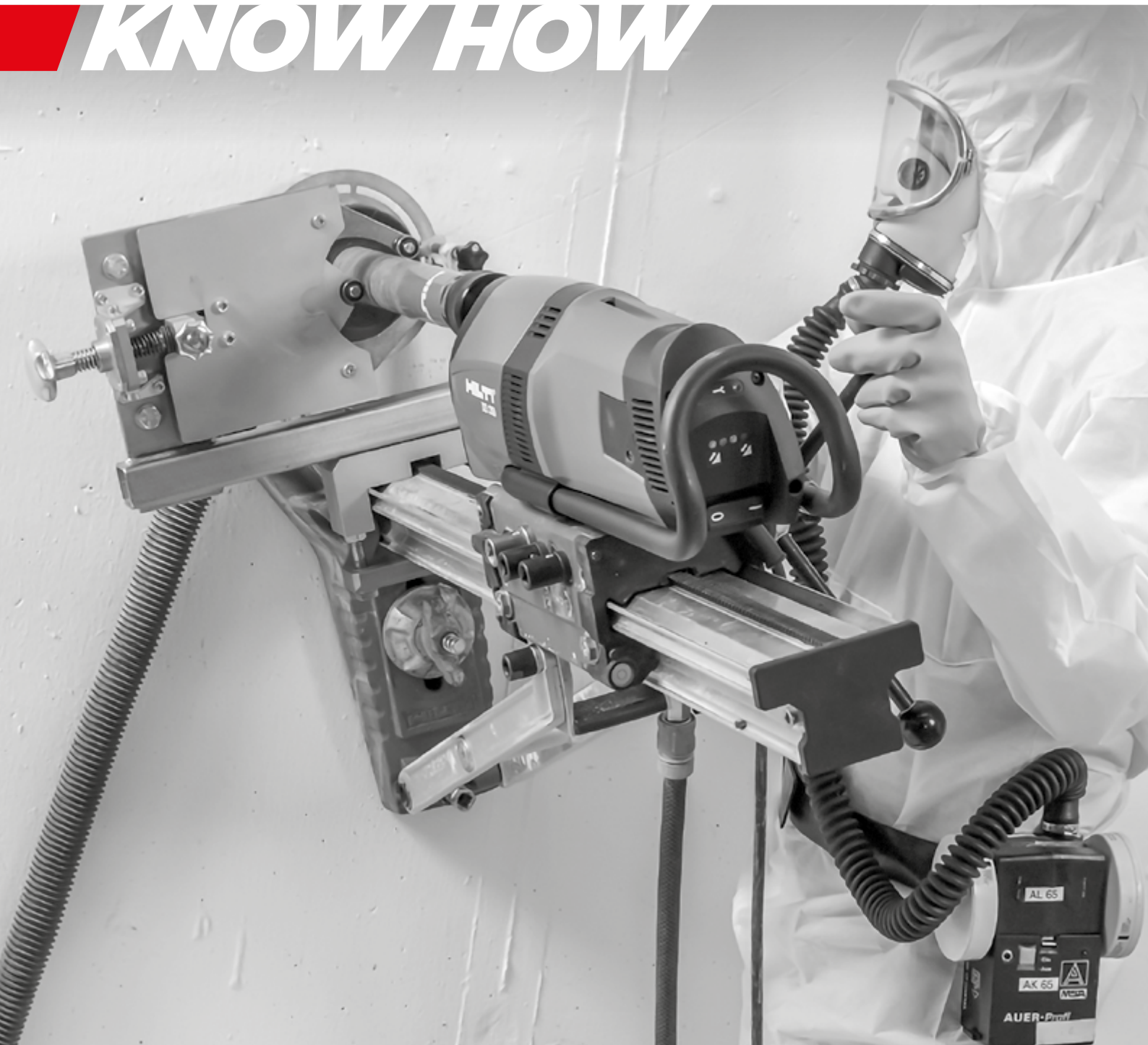
Core Cut Ltd



Corecut



NUCLEAR DECOMMISSIONING *KNOW HOW*





Our Nuclear Site Philosophy

The nuclear industry requires and demands the highest levels of safety for buildings, equipment and of those working within nuclear licensed sites.

At Corecut Nuclear, safety is our overriding priority - whether nuclear, radiological, environmental or industrial safety. We foster a safety culture within the company that permeates throughout our workforce; a workforce experienced in working in nuclear sites and a radiological environment.

Proshave® Concrete Shaving System

One of the most important elements of Nuclear De-Commissioning involves the safe removal of impregnated contamination from existing concrete structures such as Cooling Ponds, Treatment Tanks, and Waste Storage/Processing Facilities.

With this in mind, Corecut Nuclear has worked closely with its supply chain to develop the PROSHAVE® remotely operated concrete shaving system.

This system has been developed to be highly flexible and its “Sized to Fit” design allows it to be deployed in a variety of configurations to suit our clients requirements. The PROSHAVE® system comes in two specifications – PROSHAVE 210® which is electrically powered and PROSHAVE 150® which is hydraulically driven.

The use of the PROSHAVE® remote controlled system allows works to be undertaken to Wall, Floors and inverted to Soffits.

The modular design utilises industry standard components, proven in the most arduous of civil engineering environments, and allows PROSHAVE® to be deployed in a variety of ways.



KEY BENEFITS

- Provides a clean and smooth surface.
- Precision shaving of selected material to be removed, reducing waste disposal costs.
- Dust Free - Highly effective dust containment and extraction system can be connected to clients site systems or CORECUT Nuclear® can provide a self contained Dust Extraction Unit with a continuous bagging system.

USED IN

- Rail Mounted
- One Piece Deployment Frame (regular areas with multiple moves)
- Mechanical or Vacuum fixing Methods
- Fitted to Proprietary RMD type Deployment Frame
- Manual Deployment (small areas)
- Fully trained CSCS/ Classified Operatives
- Fully equipped mobile workforce covering the UK and Europe

Nuclear Decommissioning Consultancy Services

Nuclear decommissioning can be one of the most complicated engineering projects that it's possible to undertake. While undertaking decommissioning work it is necessary to both conduct difficult civil engineering processes and work with hazardous materials.

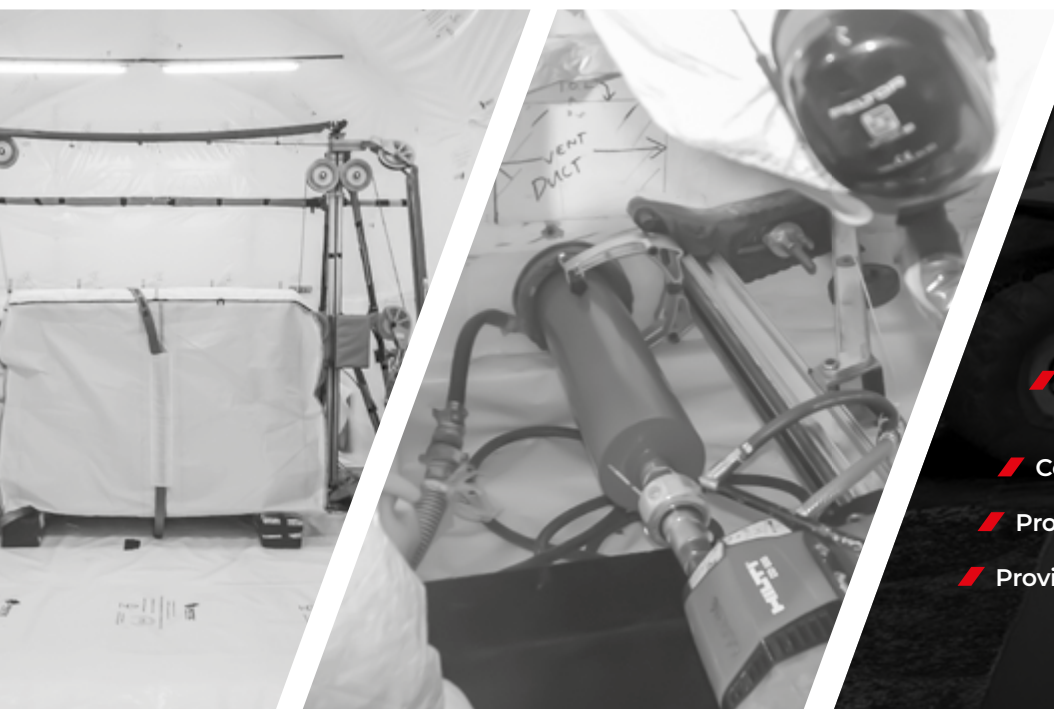
Our company are experts on a huge range of civil and structural engineering procedures which are used as part of the Nuclear Decommissioning process. We can advise on diamond drilling, diamond wire sawing, diamond wall sawing, remote controlled demolition by Robolition and concrete shaving. With 40 years of experience, our expertise on these matters is immense. We can advise on almost any concrete or metal cutting problem – no matter how complicated.

Furthermore, we have acquired considerable expertise in the nuclear industry having completed multiple projects on nuclear licensed sites across the UK for clients such as Sellafield Ltd, DSRL & Magnox Sites.

We can also provide skilled classified personnel to assist with all manner of nuclear decommissioning tasks. So if you require any additional expertise with any nuclear decommissioning project, Corecut Nuclear should be the obvious choice to provide Consultancy Services.

KEY SERVICES

- Wet/Dry Diamond Drilling
- Wet/Dry Diamond Wire Sawing of Concrete & Steel
- Wet/Dry Diamond Wall Sawing
- Remote Controlled Demolition by Robolition®
- Concrete Shaving & Planning
- Project Consultancy
- Provision of Skilled Classified Personnel





Locations

HEAD OFFICE

Core Cut Limited
Bankhead
Broxburn
West Lothian
EH52 6PP

T 01506 854 710
F 01506 853 068

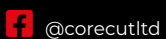
E office@corecut.co.uk

REGIONAL OFFICE

Core Cut Limited
Unit 3, Greenland Road Ind. Park
Dannemora Drive
Sheffield
S9 5DF

T 0114 243 5533
F 0114 244 7394

www.corecut.co.uk



@corecutltd



Core Cut Ltd



Corecut



HYDRO- DEMOLITION

KNOW HOW



ROBOJETTING® & MANUAL HAND LANCE HYDRODEMOLITION

Hydrodemolition



Corejet are one of the UK's Leading Hydrodemolition companies, with 40 years' experience specialising in Concrete Cutting and removal. Members of the Water Jetting Association, our team of highly skilled and CSCS/WJA accredited operatives provide innovative solutions for the construction industry.

Utilising the latest technologies Corejet specialise in both Manual Hand Lance Hydrodemolition as well as Robojetting (Robotic Hydrodemolition), allowing us to deliver a wide range of concrete removal techniques, no matter your requirements.

- Hydrodemolition
- Water Jetting
- Pipe Cleaning
- Road Marking Removal
- Painting & Coating Removal
- Airfield Rubber Removal
- Runway Maintenance
- Tank & Vessel Cleaning
- Heat Exchanger Cleaning
- Kwickblast Wet Blasting

KEY FEATURES

- Vibration-free concrete removal
- Doesn't cause micro-cracking to structure
- Provides a clean surface with an excellent profile for the application of coatings and new material
- Cleans the existing reinforcement
- Precision removal of selected material
- Effluent and Residue Control
- Remote-controlled machine-mounted operation (Robojetting) for large-scale removal
- Using Hand Lacing for difficult to access areas or small precision projects
- High Productivity



Robojetting®



The Computer Controlled Hydrodemolition Robot is completely portable having it's own diesel engine and hydraulic control system.

Electric powered options are also available for work in enclosed areas where exhaust fumes are an issue. It is ideal for mass removal of concrete. Other applications for these Robots include Surface Preparation tasks such as scabbling or Bridge Deck Waterproofing removal which can incorporate an optional Vacuum Waste Recovery. Robots are in most cases controlled by a single operator thus making them a competitive concrete removal option.

The design of the Hydrodemolition Robot ensures that high removal rates are maintained over long periods with risk to operators minimised due to the remote control nature of the equipment. In addition to the mass removal of concrete

this robotic system can be used for scabbling, laitance and coatings removal as well as UHP Surface Cleaning.

Corejet has invested in a range of accessories which help provide the best solution for every application. These include items such as Rotolance and ERGO System. Rotolance is a tool for cleaning, preparing and the light removal of paint, rubber and other layers from concrete and steel. The ERGO System facilitates the use of Robojetting equipment in bespoke environments removing the requirement for Hand Lancing.



Hand Lancing

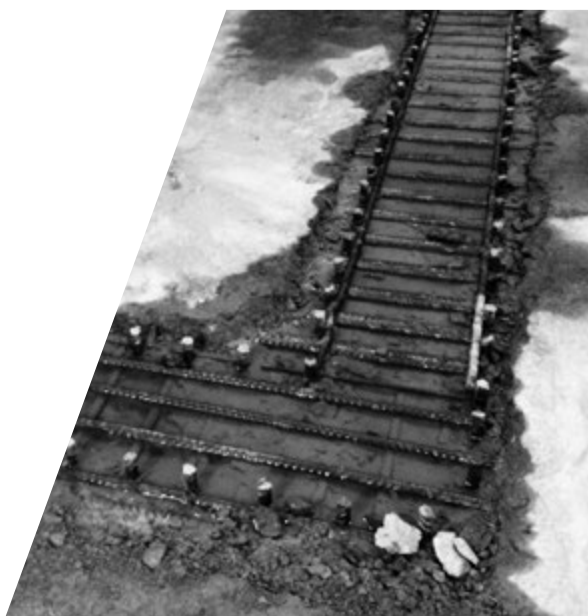


Hand Lancing is another method of Hydrodemolition available from Corejet. It is ideal for smaller precision projects in areas where access for our Robojet equipment may be restricted. There are a range of accessories available to enhance the equipment to suit individual requirements and this allows us to offer the highest quality, efficiency and reliability on every project.

Due to the light weight and small size of the Hand Held Safety Lance it is particularly suited to the removal of small volumes of material, ideal in restricted or difficult to access where precision concrete cutting is required. High Pressure Water is provided by a Trailer Pump with flow rates of between 20 to 250 litres per minute and pressures up to 3000bar enabling us to cut the aggregate within the concrete meaning we can work to a greater accuracy in some cases to the millimetre (mm).

Our portable pump units use either diesel engines or electric motors.

At Corejet we can offer a combination of Hand Lancing / Robojetting Systems which can perform High and Ultra High Pressure waterjetting applications in industrial facilities, construction sites, petrochemical works, food processing plants, nuclear sites and marine fabrication and refurbishment facilities.



KEY FEATURES

- /// Ideal for small precision projects in restricted areas
- /// Range of accessories available to customise equipment
- /// Lightweight and small, suitable for removing small material volumes
- /// Precision concrete cutting in hard-to-access areas
- /// Trailer Pump provides high-pressure water (20-250 litres/min., up to 3000 bar)
- /// Portable pump units with diesel engines or electric motors.





Locations

HEAD OFFICE

Core Cut Limited
Bankhead
Broxburn
West Lothian
EH52 6PP

T 01506 854 710
F 01506 853 068

E office@corecut.co.uk

REGIONAL OFFICE

Core Cut Limited
Unit 3, Greenland Road Ind. Park
Dannemora Drive
Sheffield
S9 5DF

T 0114 243 5533
F 0114 244 7394

www.corecut.co.uk





PASSIVE FIRE PROTECTION *KNOW HOW*

Locations

HEAD OFFICE

Core Cut Limited
 Bankhead
 Broxburn
 West Lothian
 EH52 6PP

T 01506 854 710
 F 01506 853 068

E office@corecut.co.uk

REGIONAL OFFICE

Core Cut Limited
 Unit 3, Greenland Road Ind. Park
 Dannemora Drive
 Sheffield
 S9 5DF

T 0114 243 5533
 F 0114 244 7394

www.corecut.co.uk



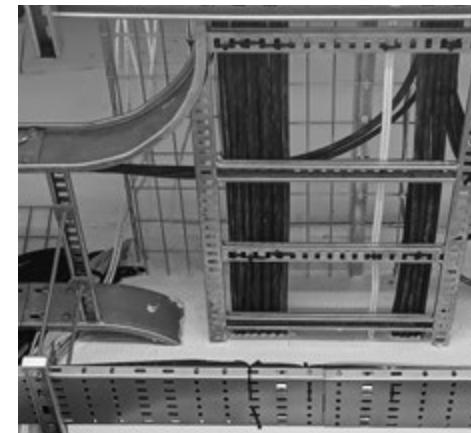
**CAVITY BARRIERS
ACOUSTIC SEALING
AIR SEALING
BOARDING SYSTEMS
INTUMESCENT
COATINGS
FIRE STOPPING**

Our fully mobile, expert workforce provide a full range of fire protection and specialist services throughout the UK.

Passive Fire Protection Services



With over 45 years' experience in the construction industry and BRE accredited, Corecut is one of the UK's leading Passive Fire Protection contractors. Our operatives are product trained and have all relevant safety training and certification. This is supported by in-house, manufacturer-backed technical support. Our efficient operational systems ensuring reliable delivery of service.



Intumescent Coatings

Our **Intumescent Coating services** protect structural steelwork using intumescent paint from leading manufacturers, expertly applied using modern airless spray units.

Cavity Barriers

Cavity Barriers provide resistance to the passage of fire and smoke within voids such as ceiling spaces and raised access floors. Corecut Fire Protection offers **a range of Cavity Barrier products and installation services.**

Fire Stopping

Fire Stopping is typically performed in the latter stages of the building project once plumbing, electrical, or mechanical services have been fitted and installed. Our **Fire Stopping services** seal any openings, joints or gaps where the spread of fire may occur.

Acoustic Sealing

Corecut Fire Protection offers a comprehensive range of **Acoustic Sealing solutions** to reduce noise transmission in industrial, commercial, multi-occupancy private properties, and more.

Air Sealing

Construction projects in the UK must adhere to regulations which stipulates appropriate levels of air leakage and energy conservation. Using the best material on the market, Corecut Fire Protection are experts in efficient and cost-effective **Air Sealing.**

Boarding Systems

Corecut Fire Protection offer a variety of **rigid and semi-rigid Boarding Systems** to provide Passive Fire Protection to structural steelwork. Our solutions encase steelwork to insulate against heat and flames for up to 240 minutes.





OFFSHORE KNOW HOW

Locations

HEAD OFFICE

Core Cut Limited
Bankhead
Broxburn
West Lothian
EH52 6PP

T 01506 854 710
F 01506 853 068

E offshore@corecut.co.uk

REGIONAL OFFICE

Core Cut Limited
Unit 3, Greenland Road Ind. Park
Dannemora Drive
Sheffield
S9 5DF

T 0114 243 5533
F 0114 244 7394

www.corecut.co.uk

@corecutltd Core Cut Ltd Corecut



Our commitment is to deliver unparalleled offshore services that prioritise safety, efficiency, and precision.

INDUSTRIAL WATER JETTING DIAMOND WIRE SAWING UHP CUTTING SERVICES CLAMSHELL CUTTING

Offshore Specialist Cutting Services



At Corecut Offshore, we have built on over 45 years of technical Know-How in Diamond Wire Sawing, Cold Cutting, UHP Water Jetting, and Controlled Demolition from the Civil Engineering and Nuclear Decommissioning industries with more than 25 years of Offshore Environmental, Construction, and Decommissioning expertise.

Our multi-skilled, fully accredited offshore team is equipped with both extensive experience and the most up-to-date cutting-edge technology to deliver a comprehensive range of offshore services. By utilising remote-controlled techniques & equipment wherever possible, ensuring safety while maximising operational efficiency.

Our offshore energy services include specialist cutting and industrial water jetting solutions in support of the following:

- **Module Separation**
- **Decommissioning of Conductors, Risers, Caissons, and Umbilicals.**
- **Jacket and Topside Separation**
- **Tank and Vessel Cutting**

With Corecut Offshore as your trusted partner, you can expect unmatched expertise, innovation, and dedication to safety on every project. Our goal is to exceed your expectations by delivering cutting solutions that optimise your offshore operations while minimising exposure of personnel and project downtime.

